



NEWINGTON
LONDON

2 Bedrooms

Apartment

Located in London

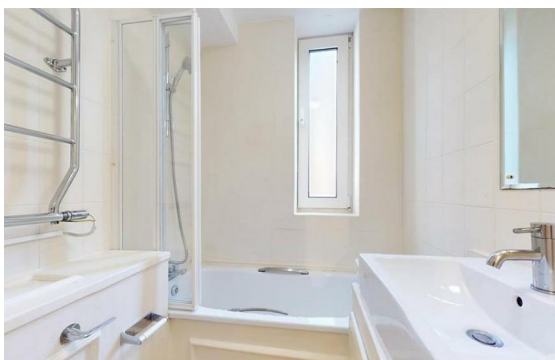
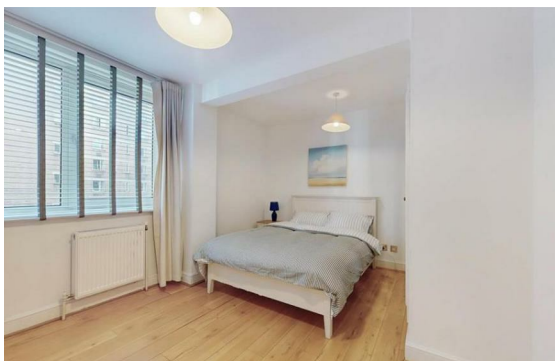
£695 Per Month



info@newingtonstates.com

<http://www.newingtonstates.com>

020 7724 2233



NEWINGTON LONDON

60 Upper Montagu Street

London

W1H 1SN

020 7724 2233

info@newingtonstates.com

This lovely two-bedroom apartment on a second floor with a lift located right opposite Regent's Park. Ideally located minutes walk from Baker Street and Marylebone tube stations, this two-bedroom property benefits from open plan living space, neutral interiors with abundance of natural light; modern furniture with both bedrooms being equal size.

Gloucester Place is moments from the multiple transport links at Baker Street tube station (Metropolitan, Bakerloo, Jubilee, Circle and Hammersmith & City lines, Zone 1) as well as Marylebone Station (Bakerloo line, Zone 1).

EPC rating: C

Energy Efficiency Rating: C

Agents Note: Whilst every care has been taken to prepare these particulars, they are for guidance purposes only. All measurements are approximate and are for general guidance purposes only and whilst every care has been taken to ensure their accuracy, they should not be relied upon and potential buyers/tenants are advised to recheck the measurements.

<http://www.newingtonstates.com>